

---

---

MEMORANDUM

---

---

**TO:** CFA BOARD OF DIRECTORS, CHAPTER PRESIDENTS, FIELD STAFF  
**FROM:** AIMEE SHRECK  
**SUBJECT:** FACULTY TRENDS - MAY TO MAY  
**DATE:** 6/2/2009

---

CSU INSTRUCTIONAL FACULTY NUMBERS: MAY 2007-08-09

Though we don't normally do a full analysis of the faculty numbers in Spring, it seemed like an important thing to do this year. The data on which these tables and charts are based come from the monthly membership reports, which are based on the raw PIMS data CFA gets each month. This means tenure line librarians are included in the Tenure-track/Tenured category. The tables show the changes in numbers (headcount and full-time equivalent) of instructional faculty, by campus and systemwide. As usual, and consistent with the trends we've noticed over the past year or so, the budget cuts appear to be affecting faculty numbers more on some campuses than on others. Since there are differences in course scheduling each term, it is important to compare spring to spring or fall to fall. The numbers from May are not good comparisons for the numbers CFA reports based on each fall term. A few observations about the May to May statistics:

*Full-time equivalent faculty*

- Overall, the number of FTEF was lower by 434 in May 09 compared with May 08 (-2.5%). However, in May 08, there were 404 FTEF more than there were in May 07. So, this spring, the number of FTE faculty teaching was approximately the same as it was in 2007.
- The number of Tenure-Track/Tenured faculty is actually slightly higher in 2009 than it was in 2008. But, the number of FTE lecturers is 507 lower than it was last year at this time (-7.6%).
- Humboldt and Pomona are exceptional in that the number of lecturers has increased on both campuses. (Northridge also increased the number of lecturers, but only by 5 FTE).
- Campuses with particularly large changes between May 08 and May 09:
  - BA, DH, and PO: all have more than 5% decrease in FTE T-Track/Tenured faculty.
  - SF, FU: both have about 20% fewer FTE lecturers

- BA, CH, EB, MA, SA, SB, SD SO, ST: all have more than 10% fewer FTE lecturers
- Overall reduction in FTEF:
 

BA	-8.1%
FU	-8.8%
MA	-6.7%
MB	-6.1%
SF	-6.5%

*Headcount*

- Overall, the number of instructional faculty (headcount) dropped by 973 between May 08 and May 09 (about 4%).
- Approximately 1080 fewer lecturers were teaching this May compared to last May. About half of the loss in lecturer numbers was among those with <40% appointments. The number of Tenure-Track/Tenured faculty was almost unchanged compared with last year, and actually almost 2% higher than in 2007.
- Campuses with particularly large changes between May 08 and May 09:
  - FU, SF: both have about 20% fewer lecturers
  - CH, MA, SD, SL, SO, ST: all have more than 10% fewer lecturers
  - BA, DH, MA, PO: all have notable reductions (5% or more) in T-T/Tenured faculty
  - Overall reduction in headcount:
 

FU	-12.1%
MA	-9.3%
SF	-11%

The data that follow include charts showing the change in total number of instructional faculty this year versus last year, in both percent and actual numbers, by campus. There are also charts showing the total number of instructional faculty in the past three months of May, by campus, to illustrate the up and down pattern over the past couple of years. The same information, broken out by classification, is also shown in a chart. The tables provide a summary of the raw data for May 2007-2008-2009, by campus.

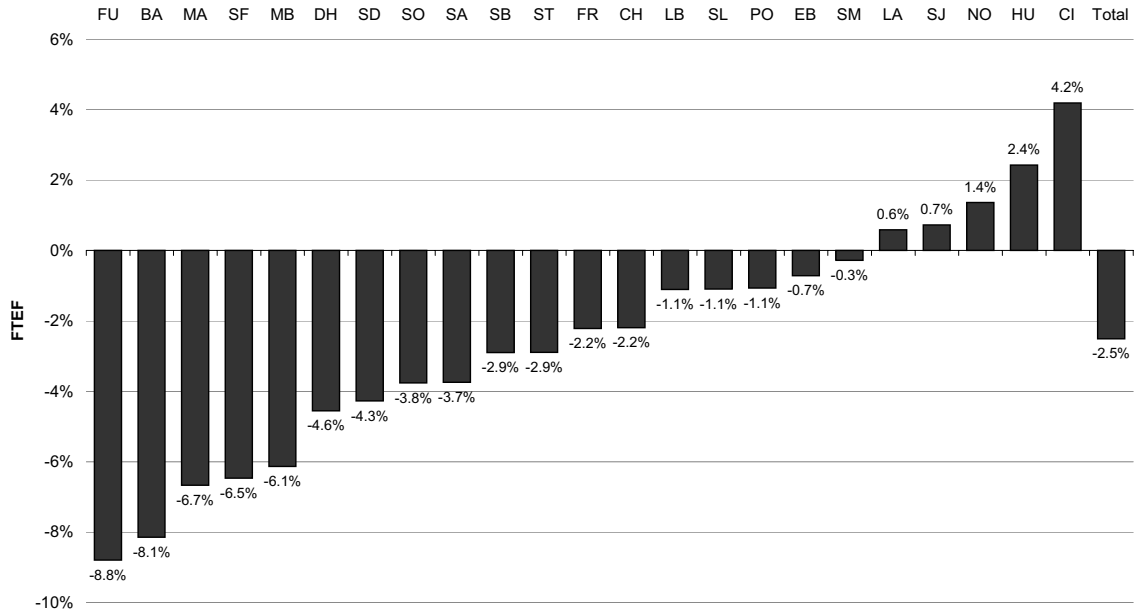
Please call or email with any questions. 916.441.4848 or [ashreck@calfac.org](mailto:ashreck@calfac.org)

**CSU INSTRUCTIONAL FACULTY, BY CAMPUS (FTEF): MAY 2007-2008-2009**

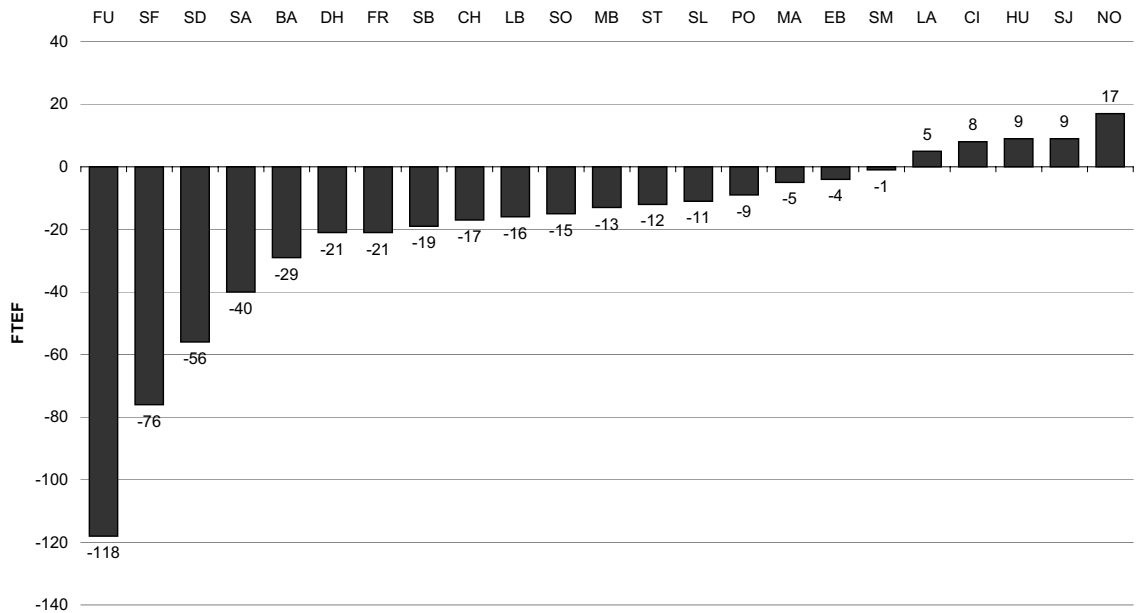
	ALL INSTRUCTIONAL					Lect ALL					Tenure Track/Tenured			
	May07	May08	May09	09 vs 08		May07	May08	May09	09 vs 08		May07	May08	May09	09 vs 08
BA	376	356	327	-29	BA	137	131	117	-14	BA	239	225	210	-15
CH	742	776	759	-17	CH	248	266	238	-28	CH	494	510	521	11
CI	170	191	199	8	CI	98	107	109	2	CI	72	84	90	6
DH	436	461	440	-21	DH	176	195	191	-4	DH	260	266	249	-17
EB	522	557	553	-4	EB	191	220	196	-24	EB	331	337	357	20
FR	935	949	928	-21	FR	396	381	347	-34	FR	539	568	581	13
FU	1,301	1,342	1,224	-118	FU	608	613	482	-131	FU	693	729	742	13
HU	387	371	380	9	HU	105	105	116	11	HU	282	266	264	-2
LA	853	849	854	5	LA	330	331	327	-4	LA	523	518	527	9
LB	1,387	1,447	1,431	-16	LB	594	625	610	-15	LB	793	822	821	-1
MA	67	75	70	-5	MA	30	36	32	-4	MA	37	39	38	-1
MB	206	212	199	-13	MB	96	100	87	-13	MB	110	112	112	0
NO	1,233	1,246	1,263	17	NO	490	495	500	5	NO	743	751	763	12
PO	873	845	836	-9	PO	304	266	288	22	PO	569	579	548	-31
SA	1,087	1,069	1,029	-40	SA	355	351	311	-40	SA	732	718	718	0
SB	650	656	637	-19	SB	258	252	225	-27	SB	392	404	412	8
SD	1,265	1,311	1,255	-56	SD	444	502	451	-51	SD	821	809	804	-5
SF	1,151	1,175	1,099	-76	SF	418	400	321	-79	SF	733	775	778	3
SJ	1,203	1,239	1,248	9	SJ	494	538	535	-3	SJ	709	701	713	12
SL	960	1,007	996	-11	SL	295	330	292	-38	SL	665	677	704	27
SM	323	358	357	-1	SM	110	128	123	-5	SM	213	230	234	4
SO	375	399	384	-15	SO	117	135	119	-16	SO	258	264	265	1
ST	396	415	403	-12	ST	146	149	130	-19	ST	250	266	273	7
<b>Total</b>	<b>16,899</b>	<b>17,303</b>	<b>16,869</b>	<b>-434</b>	<b>Total</b>	<b>6,439</b>	<b>6,654</b>	<b>6,147</b>	<b>-507</b>	<b>Total</b>	<b>10,460</b>	<b>10,649</b>	<b>10,722</b>	<b>73</b>

	Lect <40					Lect =>40			
	May07	May08	May09	09 vs 08		May07	May08	May09	09 vs 08
BA	22	21	22	1	BA	115	110	95	-15
CH	40	44	35	-9	CH	208	222	203	-19
CI	13	16	14	-2	CI	85	91	95	4
DH	37	42	36	-6	DH	139	153	155	2
EB	39	44	40	-4	EB	152	176	156	-20
FR	64	67	67	0	FR	332	314	280	-34
FU	103	103	84	-19	FU	505	510	398	-112
HU	22	25	26	1	HU	83	80	90	10
LA	76	84	76	-8	LA	254	247	251	4
LB	107	115	111	-4	LB	487	510	499	-11
MA	1	2	1	-1	MA	29	34	31	-3
MB	15	13	13	0	MB	81	87	74	-13
NO	99	99	92	-7	NO	391	396	408	12
PO	55	48	51	3	PO	249	218	237	19
SA	69	65	61	-4	SA	286	286	250	-36
SB	56	59	51	-8	SB	202	193	174	-19
SD	82	89	79	-10	SD	362	413	372	-41
SF	97	93	70	-23	SF	321	307	251	-56
SJ	99	105	100	-5	SJ	395	433	435	2
SL	43	47	41	-6	SL	252	283	251	-32
SM	25	23	24	1	SM	85	105	99	-6
SO	27	33	27	-6	SO	90	102	92	-10
ST	27	27	22	-5	ST	119	122	108	-14
<b>Total</b>	<b>1,217</b>	<b>1,263</b>	<b>1,142</b>	<b>-121</b>	<b>Total</b>	<b>5,222</b>	<b>5,391</b>	<b>5,005</b>	<b>-386</b>

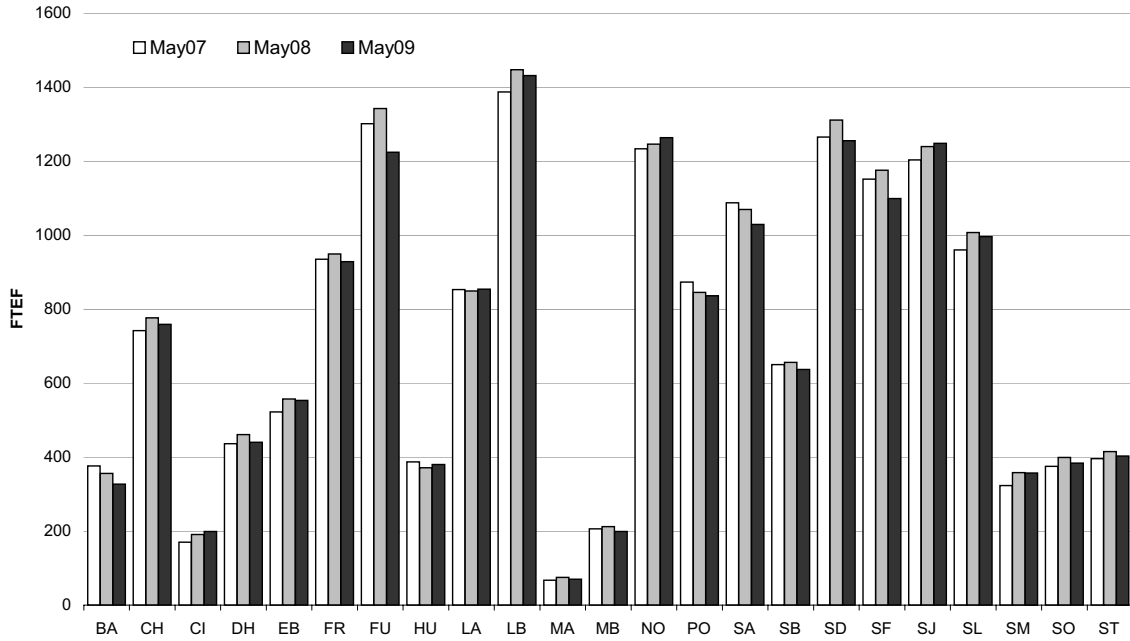
**Percent Change in Total Number of Instructional Faculty (FTE):  
May09 vs May08**



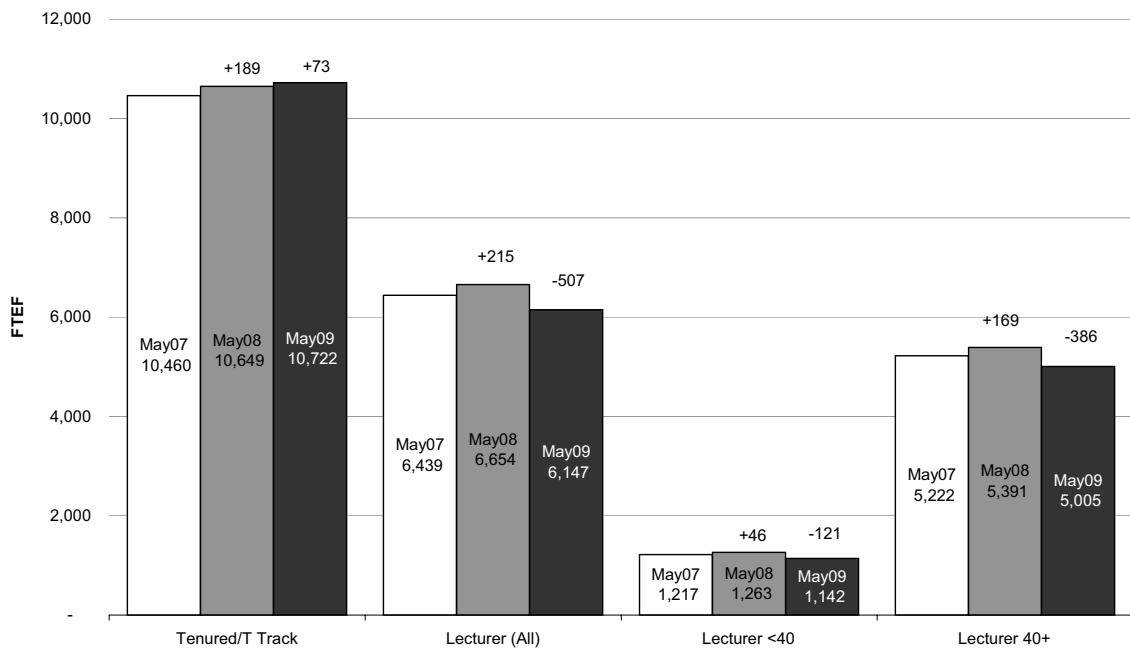
**Change in Total Number of Instructional Faculty (FTE):  
May09 vs May08**



### CSU Instructional Faculty by Campus (FTE), All Ranks: May 2007-2008-2009



### CSU Instructional Faculty (FTE): May 2007-2008-2009

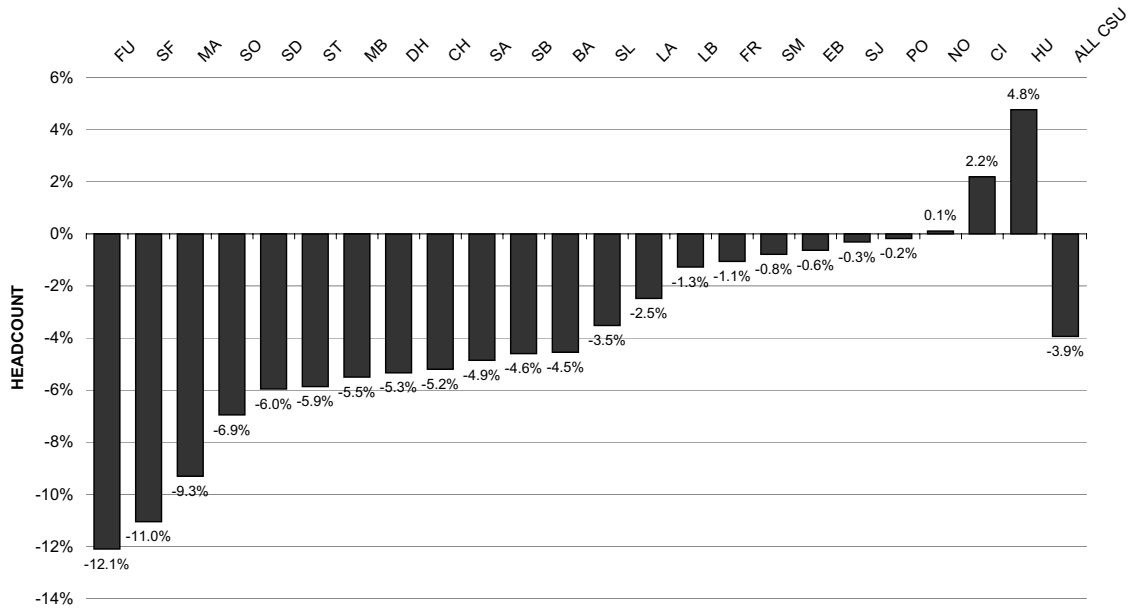


**CSU INSTRUCTIONAL FACULTY, BY CAMPUS (HEADCOUNT): MAY 2007-2008-2009**

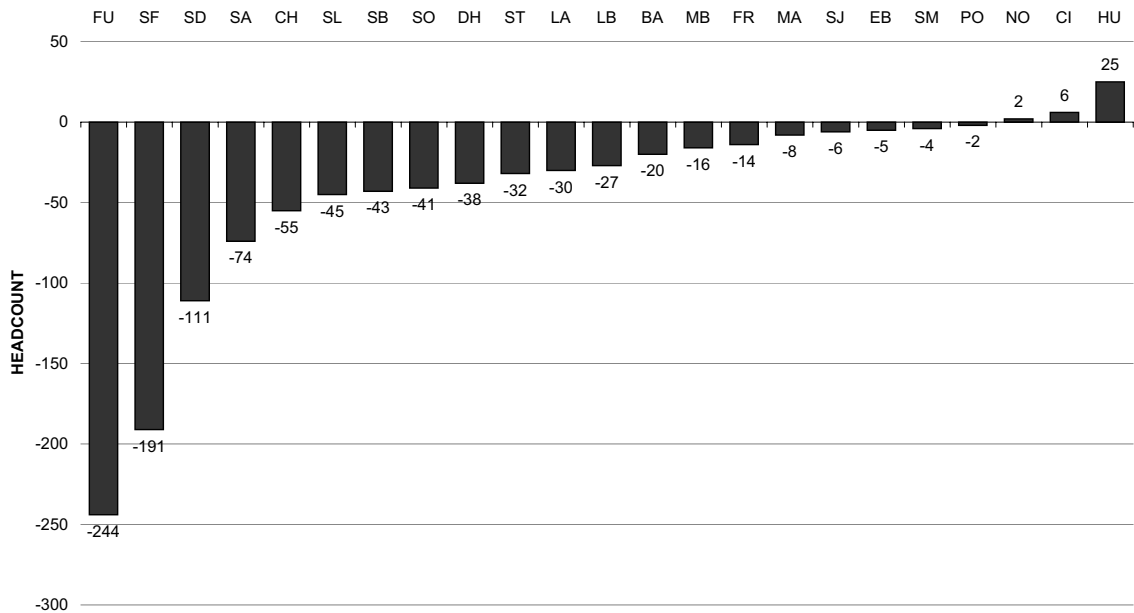
ALL INSTRUCTIONAL					Lect ALL					Tenure Track/Tenured				
	May07	May08	May09	09 vs 08		May07	May08	May09	09 vs 08		May07	May08	May09	09 vs 08
BA	466	440	420	-20	BA	223	208	202	-6	BA	243	232	218	-14
CH	1,022	1,059	1,004	-55	CH	496	524	463	-61	CH	526	535	541	6
CI	253	274	280	6	CI	180	190	189	-1	CI	73	84	91	7
DH	667	712	674	-38	DH	392	430	409	-21	DH	275	282	265	-17
EB	743	789	784	-5	EB	396	435	416	-19	EB	347	354	368	14
FR	1,315	1,324	1,310	-14	FR	761	746	713	-33	FR	554	578	597	19
FU	1,967	2,017	1,773	-244	FU	1,256	1,273	1,015	-258	FU	711	744	758	14
HU	542	525	550	25	HU	250	251	278	27	HU	292	274	272	-2
LA	1,173	1,209	1,179	-30	LA	633	666	635	-31	LA	540	543	544	1
LB	2,024	2,116	2,089	-27	LB	1,201	1,271	1,246	-25	LB	823	845	843	-2
MA	76	86	78	-8	MA	40	47	41	-6	MA	36	39	37	-2
MB	289	291	275	-16	MB	176	176	161	-15	MB	113	115	114	-1
NO	1,845	1,857	1,859	2	NO	1,076	1,083	1,073	-10	NO	769	774	786	12
PO	1,166	1,115	1,113	-2	PO	565	508	547	39	PO	601	607	566	-41
SA	1,542	1,524	1,450	-74	SA	771	770	701	-69	SA	771	754	749	-5
SB	931	936	893	-43	SB	526	519	471	-48	SB	405	417	422	5
SD	1,774	1,864	1,753	-111	SD	926	1,032	926	-106	SD	848	832	827	-5
SF	1,729	1,729	1,538	-191	SF	970	924	733	-191	SF	759	805	805	0
SJ	1,838	1,913	1,907	-6	SJ	1,104	1,187	1,169	-18	SJ	734	726	738	12
SL	1,217	1,280	1,235	-45	SL	517	570	501	-69	SL	700	710	734	24
SM	491	510	506	-4	SM	275	278	269	-9	SM	216	232	237	5
SO	542	590	549	-41	SO	272	314	275	-39	SO	270	276	274	-2
ST	530	546	514	-32	ST	273	274	236	-38	ST	257	272	278	6
<b>Total</b>	<b>24,142</b>	<b>24,706</b>	<b>23,733</b>	<b>-973</b>	<b>Total</b>	<b>13,279</b>	<b>13,676</b>	<b>12,669</b>	<b>-1,007</b>	<b>Total</b>	<b>10,863</b>	<b>11,030</b>	<b>11,064</b>	<b>34</b>

Lect <40					Lect =>40				
	May07	May08	May09	09 vs 08		May07	May08	May09	09 vs 08
BA	94	84	93	9	BA	129	124	109	-15
CH	196	211	175	-36	CH	300	313	288	-25
CI	64	69	62	-7	CI	116	121	127	6
DH	188	210	179	-31	DH	204	220	230	10
EB	181	194	197	3	EB	215	241	219	-22
FR	314	324	331	7	FR	447	422	382	-40
FU	527	527	438	-89	FU	729	746	577	-169
HU	133	139	147	8	HU	117	112	131	19
LA	319	344	313	-31	LA	314	322	322	0
LB	519	562	545	-17	LB	682	709	701	-8
MA	5	8	6	-2	MA	35	39	35	-4
MB	65	55	56	1	MB	111	121	105	-16
NO	496	492	453	-39	NO	580	591	620	29
PO	235	208	219	11	PO	330	300	328	28
SA	340	337	318	-19	SA	431	433	383	-50
SB	247	253	221	-32	SB	279	266	250	-16
SD	418	455	409	-46	SD	508	577	517	-60
SF	471	449	346	-103	SF	499	475	387	-88
SJ	483	511	485	-26	SJ	621	676	684	8
SL	189	209	181	-28	SL	328	361	320	-41
SM	147	118	124	6	SM	128	160	145	-15
SO	142	168	138	-30	SO	130	146	137	-9
ST	113	113	93	-20	ST	160	161	143	-18
<b>Total</b>	<b>5,886</b>	<b>6,040</b>	<b>5,529</b>	<b>-511</b>	<b>Total</b>	<b>7,393</b>	<b>7,636</b>	<b>7,140</b>	<b>-496</b>

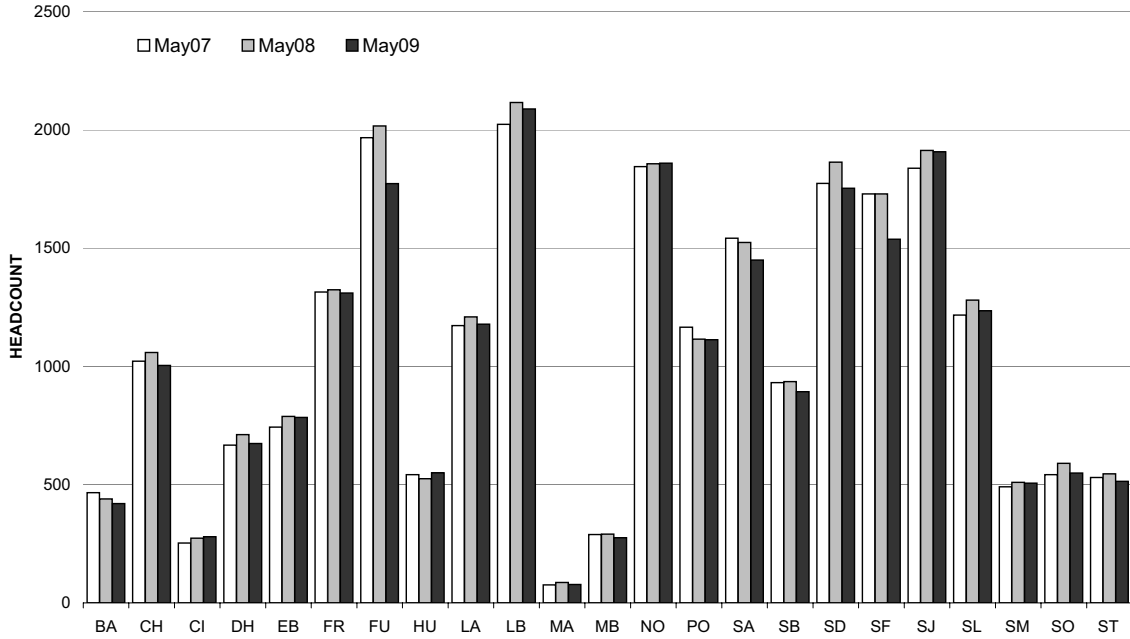
**Percent Change in Total Number of Instructional Faculty (HC):  
May09 vs May08**



**Change in Total Number of Instructional Faculty (HC):  
May09 vs May08**



**CSU Instructional Faculty by Campus (HC), All Ranks:  
May 2007-2008-2009**



**CSU Instructional Faculty (HC): May 2007-2008-2009**

