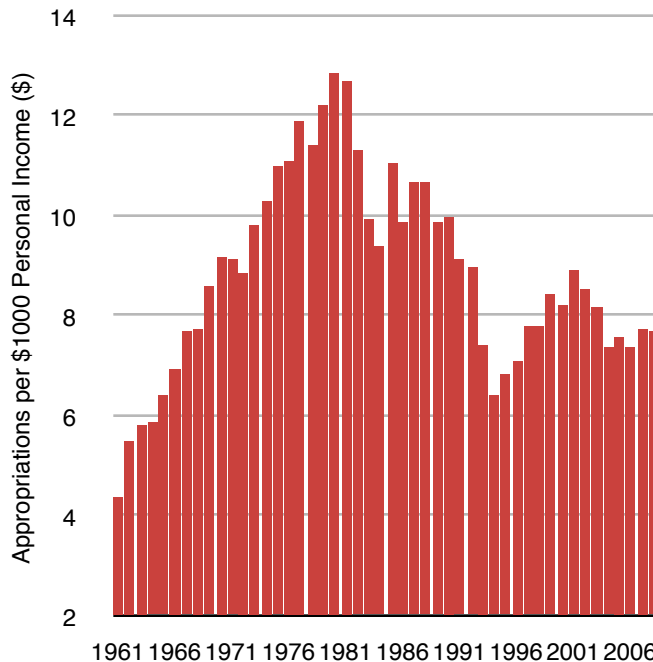


CALIFORNIA'S DECLINING INVESTMENT IN PUBLIC HIGHER EDUCATION

In FY2008, California appropriated \$7.71 per \$1000 of state personal income, ranking the state #21 among all states. In FY1980, California ranked 11th on this measure when it invested \$12.86 per \$1000 of state personal income.

California Appropriations of State Tax Funds for Higher Education per \$1000 of Personal Income: FY1961 to FY2008

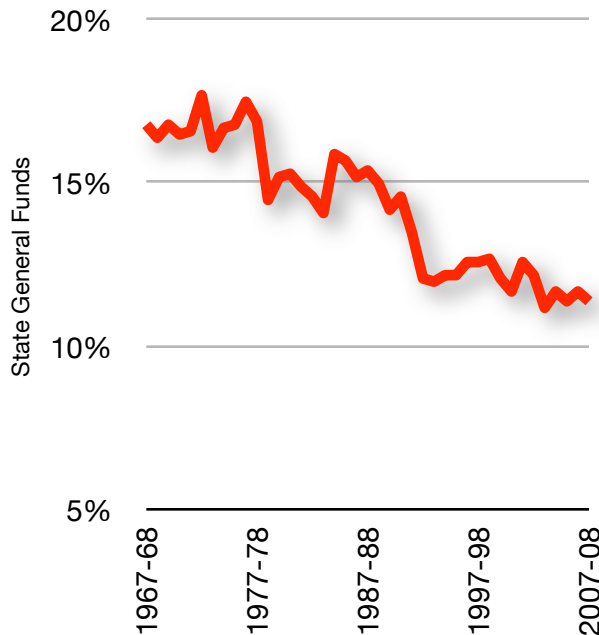


Source: Illinois State University and Bureau of Economic Analysis

➔ *If California had maintained the investment it made in FY1980, an additional \$3.2 billion would have been invested in higher education last year.*

California devotes a smaller and smaller percentage of its general funds each year to support its world-famous higher education system.

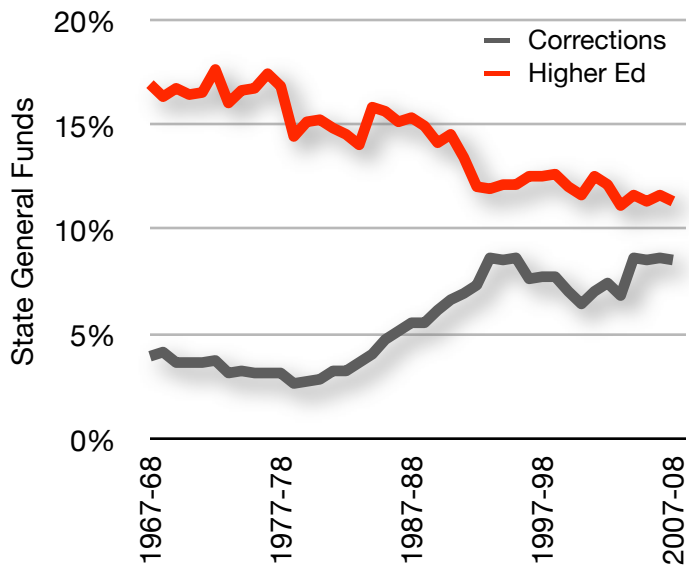
California General Fund Spending on Higher Education Since 1967



Source: CA Postsecondary Education Commission

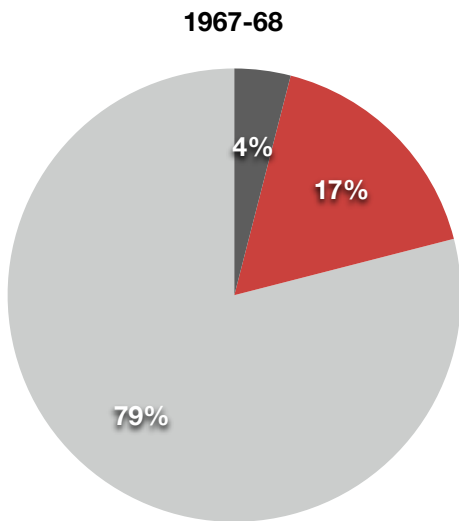
➔ *From a high of almost 18% in FY1973, in FY2008, California devoted only 11% of its budget to higher education.*

California Spending on Corrections and Higher Education since 1967

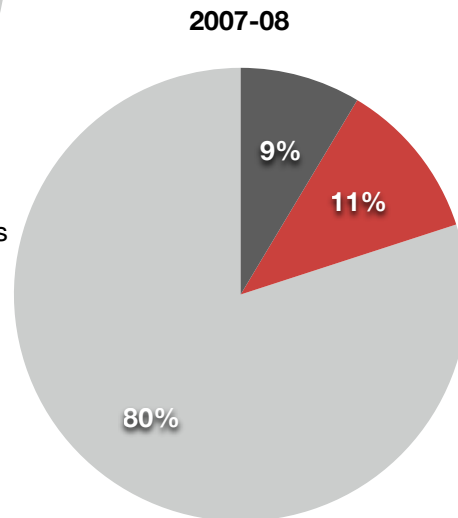


source: CA Postsecondary Education Commission

When California adopted its Master Plan for Higher Education, it dedicated 17% of General Fund budget to higher education. In the 40 years that followed, the state has abandoned its historic commitment.



➔ *California still spends one of every five general fund dollars on its corrections and higher education agencies, but the proportion of funds devoted to each has shifted radically.*



California General Fund Spending Prisons More than Doubles as Spending on Higher Education Shrinks

For More Information Contact:

California Faculty Association
 980 9th Street, Suite 2250, Sacramento, CA 95814
 916.441.4848 * www.calfac.org